

SKD



## SPIROKANALSKI DIFUZOR TUBE SLOT DIFFUSER

### OPIS:

Spirokanalski difuzor je primeren za dovajanje toplega in hladnega zraka v večje prostore (telovadnice, dvorane, industrijske hale...)

### KONSTRUKCIJA:

- difuzor oblikovan v cev
- poljubno število rež
- črni plastični usmerniki zraka.

### DODATKI:

- na željo kupca se vgradi regulator količine zraka. Regulator se nastavlja s pomočjo izvijača skozi režo.
- v kolikor je v liniji vgrajenih več spirokanalskih difuzorjev brez regulatorja, priporočamo, da se med njimi vgradijo enostavne regulacijske lopute

**MATERIAL:** pocinkana pločevina

**BARVA:** bela barva RAL 9010 ali na željo kupca poljubna barva po RAL lestvici

### DESCRIPTION:

Tube slot diffuser is suitable for the supply of warm and cold air to larger areas (e.g. of gymnasiums, conference and industrial halls).

### CONSTRUCTION:

- tube shaped diffuser
- optional numbers of slots
- black plastic air deflector elements

### ACCESSORIES:

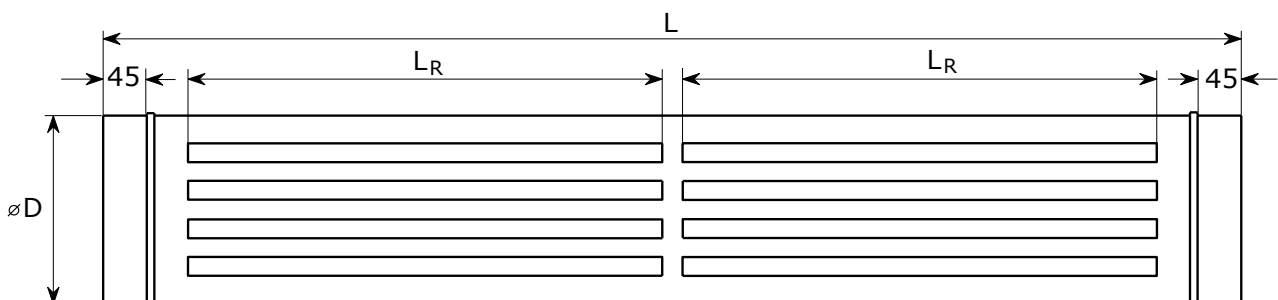
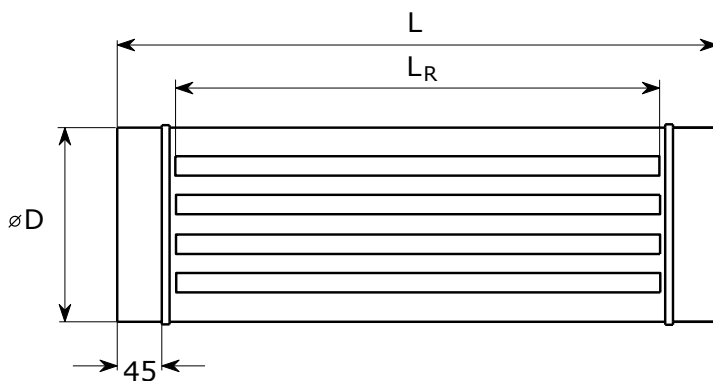
- air volume regulator is installed on customer's request. Regulator is adjusted with a screwdriver through a slot.
- damper is recommended for installation with several tube slot diffusers without regulator in one line

**MATERIAL:** galvanized sheet metal

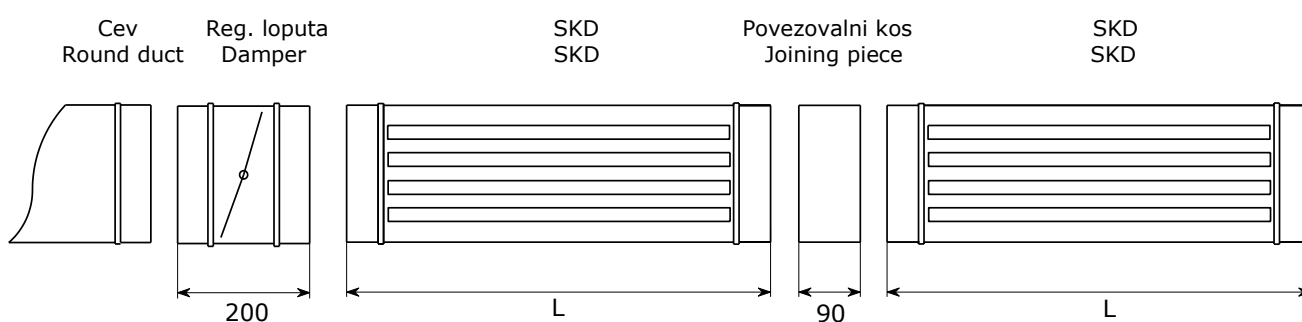
**FINISH:** white RAL 9010 or can be any RAL colour according to the customer's request.

### DIMENZIJE / DIMENSIONS:

1. cev / tube
2. plastični usmerniki zraka / plastic air deflector
3. regulator pretoka zraka / air volume regulator



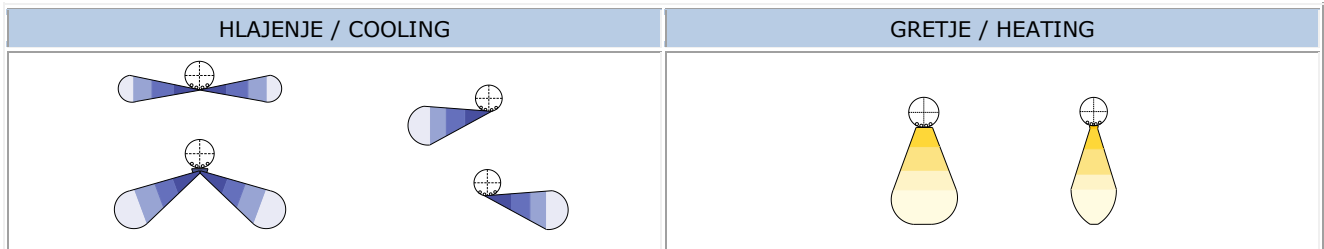
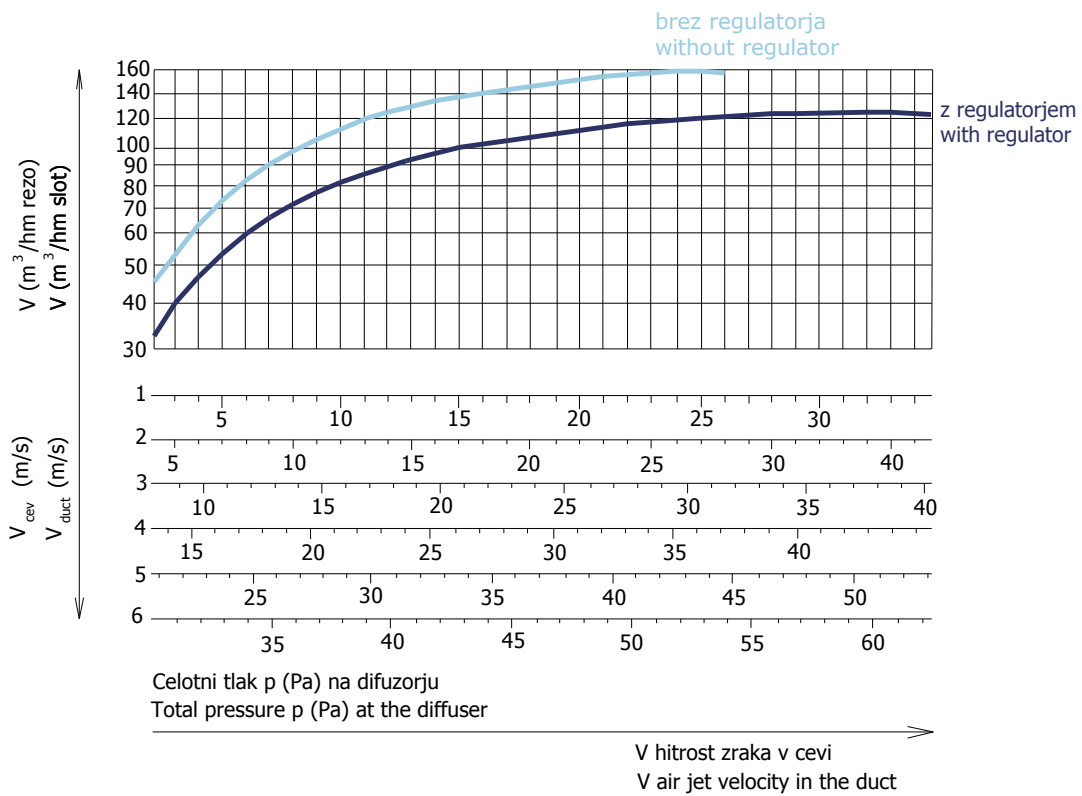
L	L <sub>R</sub>	Ø D	št. rež / no. of slots
620	500	150 – 280	2 – 4
		280 – 355	2 – 6
		355 – 500	2 – 8
		500 – 900	2 – 14
1200	2x500	150 – 280	2 – 4
		280 – 355	2 – 6
		355 – 500	2 – 8
		500 – 900	2 – 14

**MONTAŽA / MONTAGE:****TEHNIČNI PODATKI / TECHNICAL DATA:**

L reže L of slot	Število rež No. of slots	L <sub>wa</sub> [dB(a)]	Priporočen pretok zraka / Recommended air flow volume [m <sup>3</sup> /h]			
			150-250	280-355	400-450	500-900
500	2	26	90	90	90	90
	4	30	180	180	180	180
	6	34		270	270	270
	8	35			360	360
	10	36			450	450
	12	37				540
	14	38				630
2x500	2	35	180	180	180	180
	4	38	360	360	360	360
	6	40		540	540	540
	8	41			720	720
	10	46			900	900
	12	46				1080
	14	47				1260

Priporočen pretok zraka je 45 m<sup>3</sup>/h na režo (L=500mm) / The recommended air flow is 45 m<sup>3</sup>/h per slot (L=500mm)

Diagram za določitev padca tlaka / Pressure drop determination diagram



NAČIN NAROČANJA / HOW TO ORDER:

SKD	315	/	2	L=620	REGULATOR	ZN	RAL 9010
							barva / colour standard RAL 9010 optional
							material: standard ZN opcija / optional AL, INOX
							dodatki / supplements: regulator pretoka zraka / air volume regulator regulacijska loputa / damper povezovalni kos / joining piece
							dolžina difuzorja L / length of diffuser L
							število rež / number of slots
							dimenzija cevi / tube dimension
							tip difuzorja / diffuser type